



WORLD'S
MOST
CERTIFIED
Green Brand

GRAPHENSTONE

THE ORIGINAL & AUTHENTIC

A close-up photograph of a hand holding a single drop of water, poised to release it onto a small, vibrant green seedling that is growing out of dark, rich soil. The background is a soft, out-of-focus green, suggesting a natural, outdoor setting. The overall composition is clean and focused on the theme of growth and sustainability.

WORLD'S
MOST
CERTIFIED
GREEN
BRAND

GRAPHENSTONE

THE ORIGINAL & AUTHENTIC

Graphenstone is quality and certification. Among our values, ecology, sustainability and respect for the environment with products that comply with the principles of circular economy prevail. Our aim is to innovate and create ecological, natural products that respect people's health and the environment.

Our brand philosophy aims to serve as a reference in the sector by meeting the requirements of green building through economic activity. **After all, we believe that innovation and sustainability go hand in hand.**

Our commitment to sustainability and the environment is evidenced by the most demanding and internationally renowned certificates and quality seals. We are proud to claim that Graphenstone **is the world's most certified green paint company.**

Quality & Certification

ENVIRONMENTALLY SUSTAINABLE MATERIALS.

The raw materials used to manufacture our products feature a reduced environmental impact, with certificates proving it.

Environmental Product Declaration

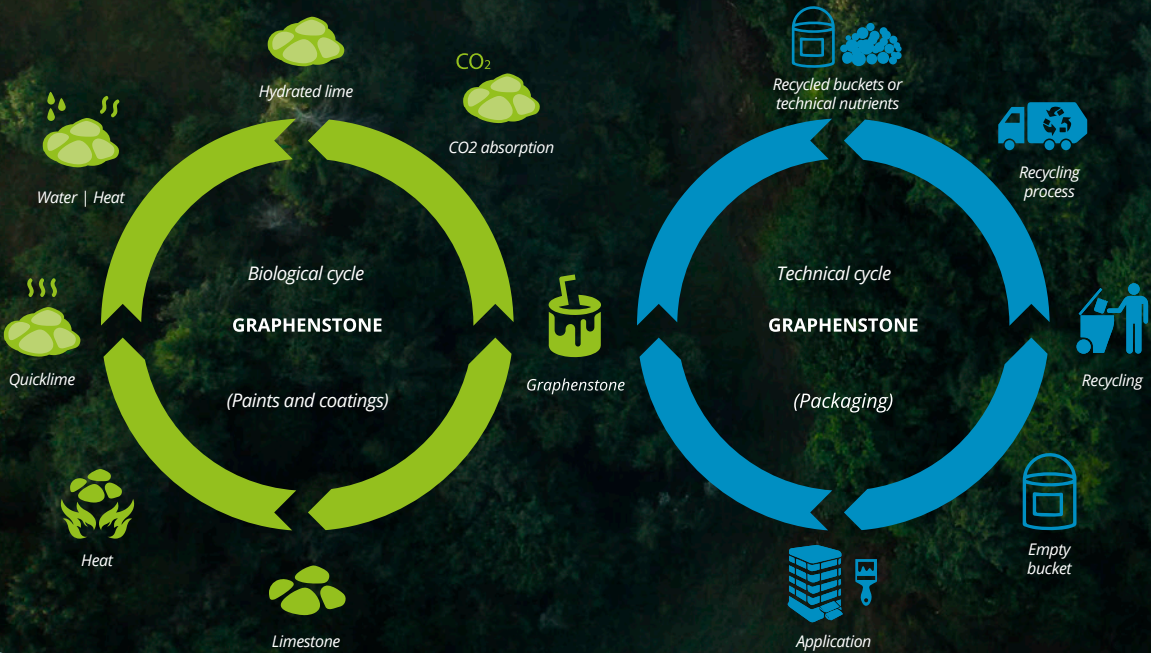
The Environmental Product Declaration (EPD) is an international certification that assesses the environmental impact of products taking into account the life-cycle, the absence of polluting emissions and other relevant environmental information.

S-P-01050 EPD®
environdec.com



Cradle to Cradle Gold

International certification that recognises product sustainability by evaluating material safety, reuse potential, use of renewable energy, water management and the company's social responsibility.



Global GreenTag GreenRate Level B

International certification that analyzes the safety and environmental toxicity of products, assessing areas such as resource use, waste reduction, greenhouse footprint and water use. All these aspects are carefully addressed at Graphenstone, having obtained the highest level within this certification (Level A).



Water use



Waste reduction



Greenhouse footprint



POLLUTION REDUCTION

Graphenstone products are formulated with raw materials that have passed the VOCs, and formaldehyde testing as well as Global GreenTag ingredient toxicity assessment. Independent testing has shown that their composition can contribute to improved indoor air quality by absorbing CO₂.



CO2 Absorption Declaration

Study that proves that Graphenstone's lime-based paints absorb CO₂ from the environment during their carbonation process. In this line, three 15-litre buckets of Graphenstone paint absorb the same amount of CO₂ as an adult tree in one year.



THREE 15L BUCKETS
absorb the same
amount of CO₂ as an
adult tree in a year,
turning your house into
a TREE.



Positive carbon footprint

The carbon footprint is an environmental indicator that measures the greenhouse gases emitted by a product, person or organization. Having a positive carbon footprint means that, when the company's products and actions are combined, Graphenstone has a positive impact on the climate and the environment. In this way, the company is aligned with the objectives of the Paris Agreement on climate change.



Ecolabel

EU ecological label of environmental excellence awarded to those products that meet strict sustainability criteria, have a low environmental impact and are durable, easy to repair and recycle.



Sustainable
paint



Low environmental
impact

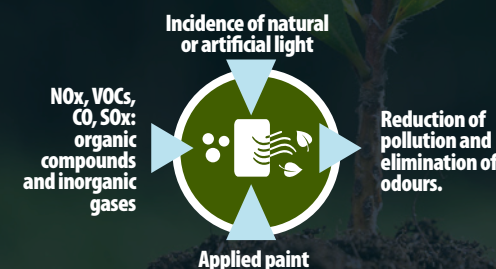


Easily
recyclable



Iberian Association of Photocatalysis

Graphenstone is a member of the association that brings together building material manufacturers with a focus on photocatalysis. Photocatalytic paints purify the environment through the incidence of light on them. In this way, they reduce urban pollution and eliminate odours from domestic animals or tobacco.



All this highlights the differentiating factor of Graphenstone from other products in the paint and building sector, as it contributes to a more efficient use of resources and a higher level of environmental protection.

My home is a tree

ENERGY SAVINGS AND EFFICIENCY

Graphenstone paints combine lime and graphene technology in a unique formula that we call Graphenstone Technology. This combination of materials contributes to extending the paint's shelf life, generating greater energy savings, regulating and improving the temperature distribution of rooms.

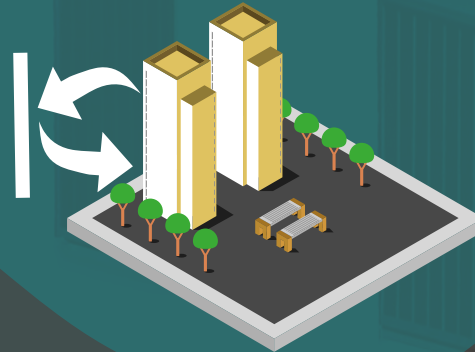


Solar Reflectance Index

Graphenstone products feature high solar reflection rates, meaning that their materials do not heat up as much, thereby reducing energy consumption.



High solar reflection indexes of the paint applied on the surface (exterior wall)



Q Sustainable

Seal that certifies the sustainability of building construction materials. It translates into energy and maintenance savings, as well as an increase in the materials' lifespan.



Energy saving



Maintenance savings



Materials' life span



Graphenstone Premium products are free of VOC emissions. Volatile organic compounds, or VOCs, are toxic in suspension that are usually released through the use of solvents or plastic paints. Our products, being mineral based, prevent the emission of these harmful substances. Dozens of tests and VOC analyses guarantee the quality of the air after applying our paints.

SPACES FREE OF TOXIC EMISSIONS



Indoor Air Comfort Gold

This certification guarantees that the requirements for low VOC emissions are met and demonstrates the company's focus on contributing to the creation of healthier spaces with improved air quality. The certificate also guarantees compliance with emission requirements in several European and non-EU countries, such as the French Class A+, the German AgBB or the Finnish M1.



We improve the life quality at home

PLEASANT AND HEALTHY SPACES

Graphenstone contributes to healthier homes thanks to the natural materials used for the entire product range. This means that people with health problems, breathing difficulties, asthma or allergies can breathe cleaner, fresher air.



Sensitive Choice

Global program that identifies through research and testing those products that, due to their composition, benefit people with asthma or allergies.



Asthma and breathing problems



Allergies and chemical intolerances



Skin allergies



Eye allergies



Cradle to Cradle Material Health Gold

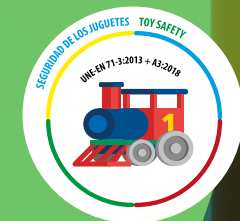
Part of Cradle to Cradle, the certificate assesses the materials' healthy nature and offers a reliable tool to evaluate and verify the use of safe chemicals.



Natural components that purify the air

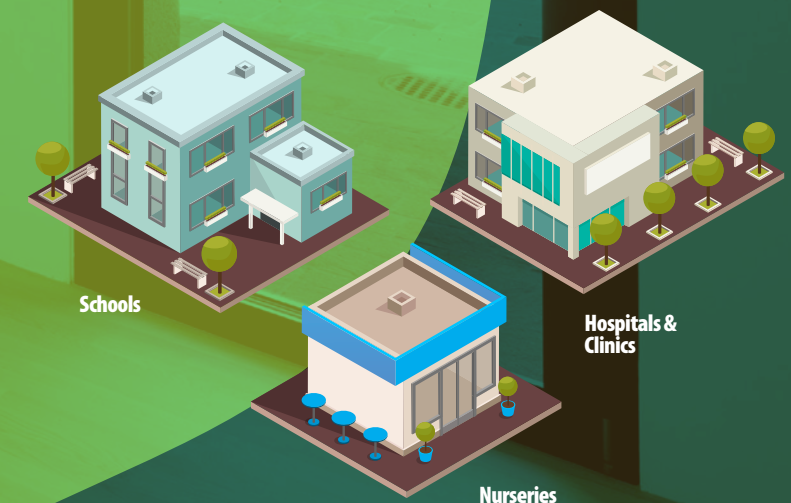
Global GreenTag HealthRATE Platinum

This is a label of great international prestige that guarantees the use of healthy products. The Platinum classification of Graphenstone products places the company as a world leader in the implementation of healthy materials in the paint and construction sector.



Toy Safety

Following the European Standard EN 71 3: 2013 + A2: 2017, the study certifies that Graphenstone creates spaces free of toxic and harmful substances, making them especially suitable for the rooms of the youngest members of the household, nurseries, schools or pediatric clinics.



We create healthy spaces

SUSTAINABLE BUILDINGS

Paints and coatings are one of the most economical and simple ways to improve the green certification of a building. Graphenstone materials contribute positively to obtain green building certifications such as LEED, BREEAM, WELL or Passivhaus.

Turn your city into a forest



Your home can create healthier environments for you and your family, contribute to cleaning up the air in cities and help fight global warming. Make your house eliminate as much CO2 as an adult tree by painting it with Graphenstone. Turn your house into a tree, your building into a garden and your city into a forest!

Visit our website for further information or scan this QR with your phone.

www.myhomeisatree.com/au/



BREEAM

A building sustainability assessment and certification method that evaluates ten different categories: management, health and well-being, energy, transport, water, materials, waste, ecological use of the soil, pollution and innovation.



HEALTH & WELLNESS
SyB2/SyB8 - Indoor air quality



MATERIALS
MAT 1 - Life-cycle impacts
MAT 3 - Responsible sourcing of materials
MAT 8 - Materials with low environmental impact
MAT 10 - Responsible procurement of finishing materials



INNOVATION



PASSIVHAUS

Passivhaus, or passive house, is a construction standard originated in Germany that combines high interior comfort with low energy consumption and affordable price.



Indoor comfort



Energy efficiency



LEED

Sustainable building certification system developed by the US Green Building Council. It takes into account the incorporation of aspects related to energy efficiency, the use of alternative energies, the improvement of environmental quality, the efficiency of water consumption, the sustainable development of open spaces and the selection of materials.



SUSTAINABLE SITES (SS)
SS - Reduction of heat island effect



MATERIALS AND RESOURCES (MR)
MR - Reduction of the building's life cycle impact
MR - Product optimization and disclosure - Environmental Product Declaration
MR - Product optimization and disclosure - Material Components
MR - Construction and Demolition Waste Management



INDOOR ENVIRONMENT QUALITY (IEQ)
EQ - Low emission materials
EQ - Indoor air quality analysis
EQ - Interior lighting



INNOVATION IN DESIGN (ID)
IN - Innovation in design. Exemplary performance.



WELL

Qualification system aimed at measuring, certifying and monitoring the characteristics of a property that impact on people's health and well-being.

#PaintDifferent

A close-up photograph of a hand holding a water droplet just above a small green seedling growing from dark soil. The background is a soft-focus green and blue. The image is framed by a dark, wavy, organic shape that separates it from the rest of the page.

GRAPHENSTONE

THE ORIGINAL & AUTHENTIC

Graphenstone Australia | Nutech Head Office
2-4 Keppler Circuit, Seaford
VIC 3198 AUSTRALIA

Phone: (+61) 3 9770 3019
graphenstone@nutech.com.au
www.graphenstone.com.au

IEdiSA, SA. © Copyright 2021. All rights reserved.